



Community Workshop 1

Wednesday, June 4, 2025
7 PM

Richmond Senior Center
New Milford, CT

WXY



What one word or phrase describes your hope for the future of the Riverfront?

Scan this QR code with your phone:



or

*Open a browser,
go to menti.com,
and enter the code:
4945 4493*

Live Polling Results

What one word or phrase describes your hope for the future of the Riverfront?



Agenda

Presentation

7:10-7:35 PM

Introduction

Project Overview

The Riverfront Opportunity

Key Design Challenges

Workshop Format

Workshop Open House *7:35-9:00 PM*

1

Introduction

WXY and Langan are an award winning design team with extensive experience in reimagining riverfronts.



Toledo Riverwalk (under construction)



Battery SeaGlass (NYC)



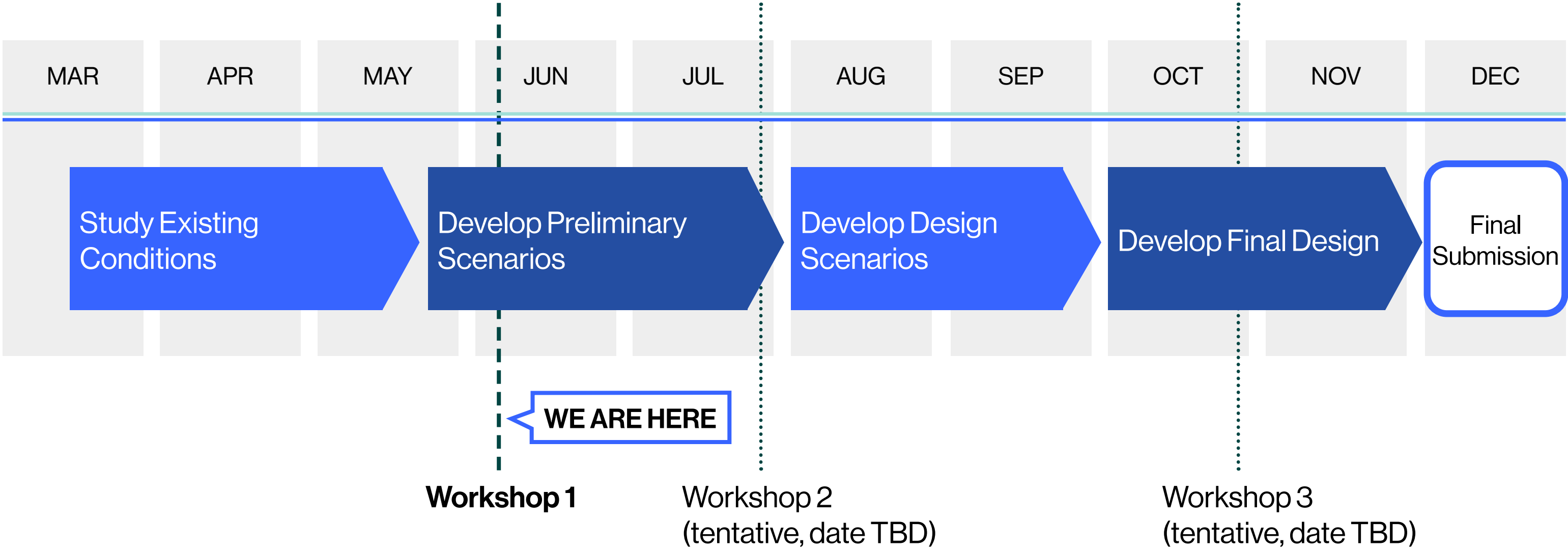
Riverbend Park, Middletown (Langan)

Our Objective

Create a **dynamic 21st-century riverfront** integrated with New Milford's Town Center to catalyze community development, resiliency, and revenue generation for the town while protecting the Housatonic River and its ecosystem.

—The New Milford Riverfront Renewal Plan, 2020

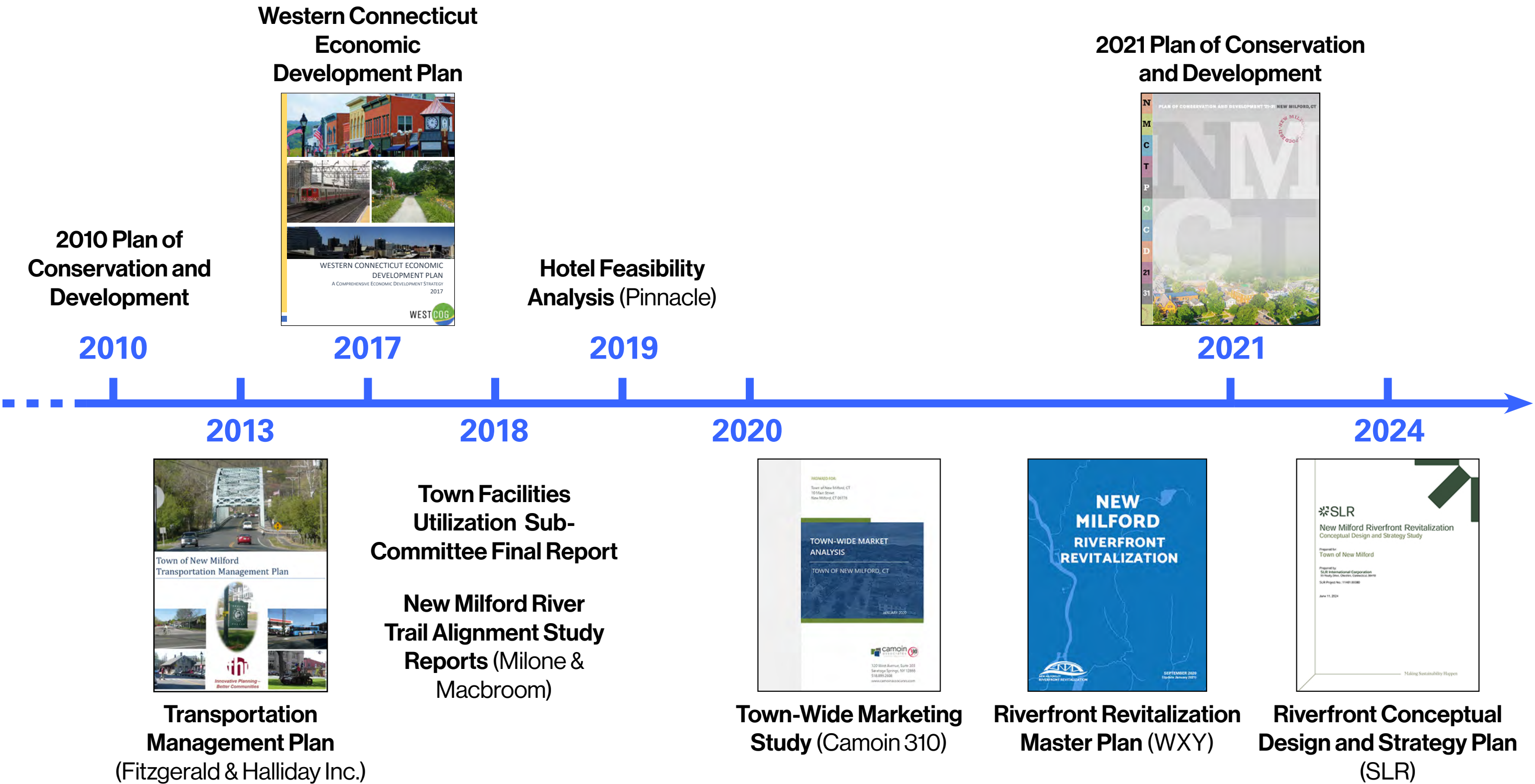
Project Timeline



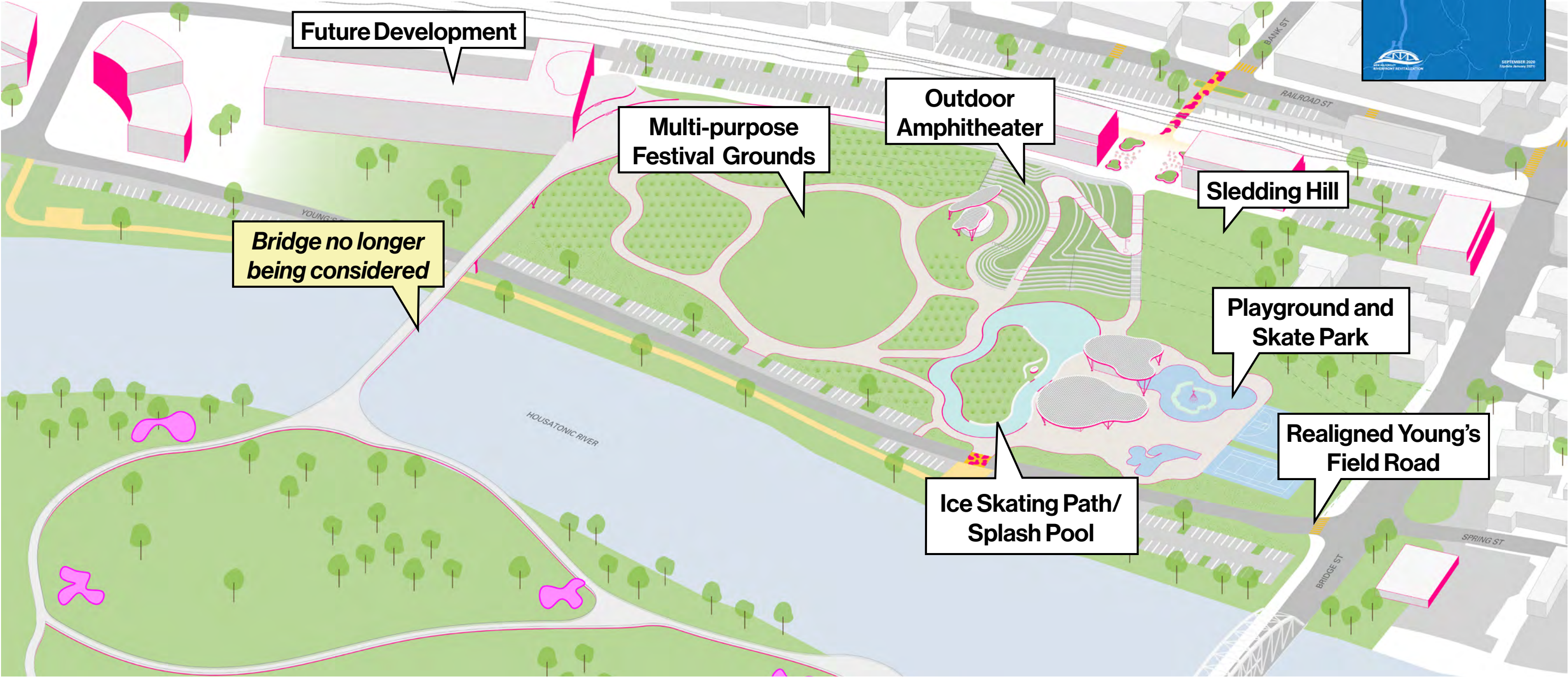
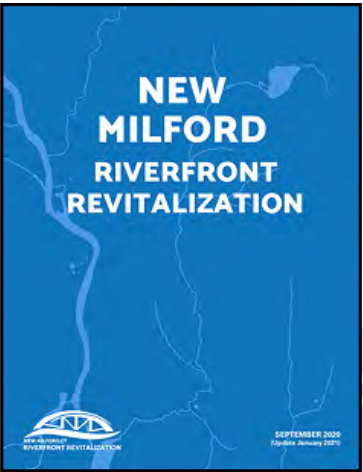
2

Project Overview

Building on Past Work



2020 Conceptual Plan (WXY)



2024 Refined Conceptual Plan (SLR)



Key Changes since the Conceptual Plan



New market dynamics post-COVID with rising demand for a variety of housing



Increasing demand for open space access post-COVID



**American Rescue Plan Act
Funding for Design Development**

3

The Riverfront Opportunity

New Milford has a unique opportunity
to leverage and enhance its valuable
Riverfront assets **to unlock greater
public benefit.**



Our Principles



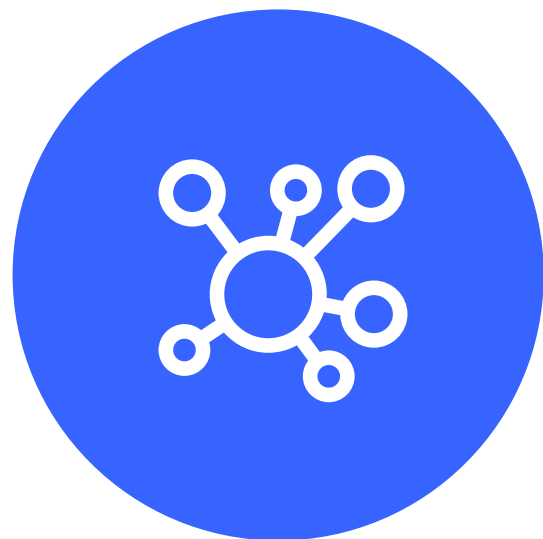
Multifunctional Riverfront



Implementable and Achievable



Diverse Uses and Ecosystems



Connected and Multimodal



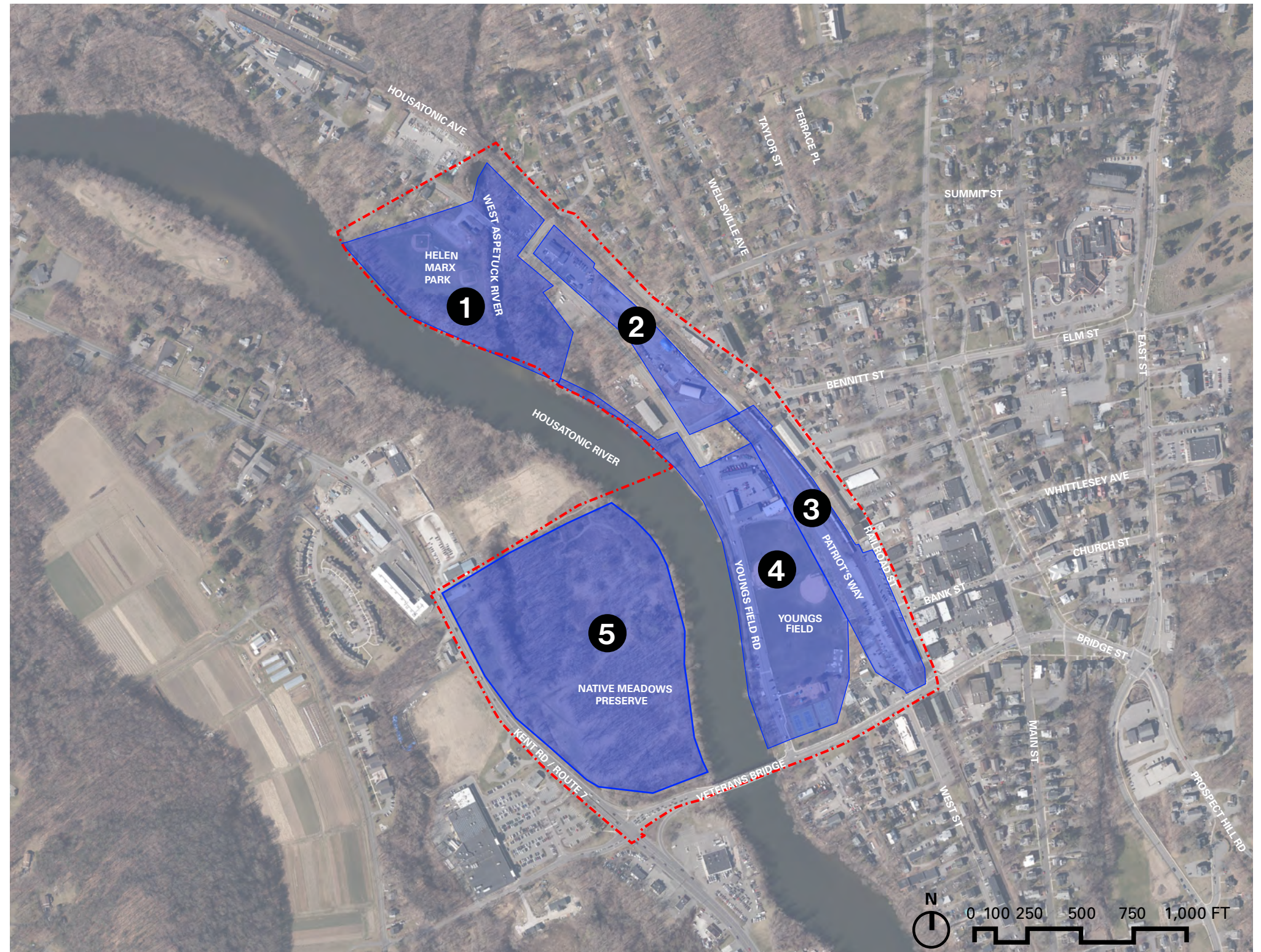
Accessible and Experiential



Sustainable and Innovative

The site: 50+ acres of publicly-owned riverfront

- ❶ Helen Marx Field and West Aspetuck Wetlands
- ❷ Department of Public Works (DPW) Storage Area and Recycling Center
- ❸ Patriot's Way
- ❹ Young's Field and Department of Public Works (DPW) Site
- ❺ Native Meadows Preserve (permanent conservation land)



Young's Field and Department of Public Works Site (DPW)



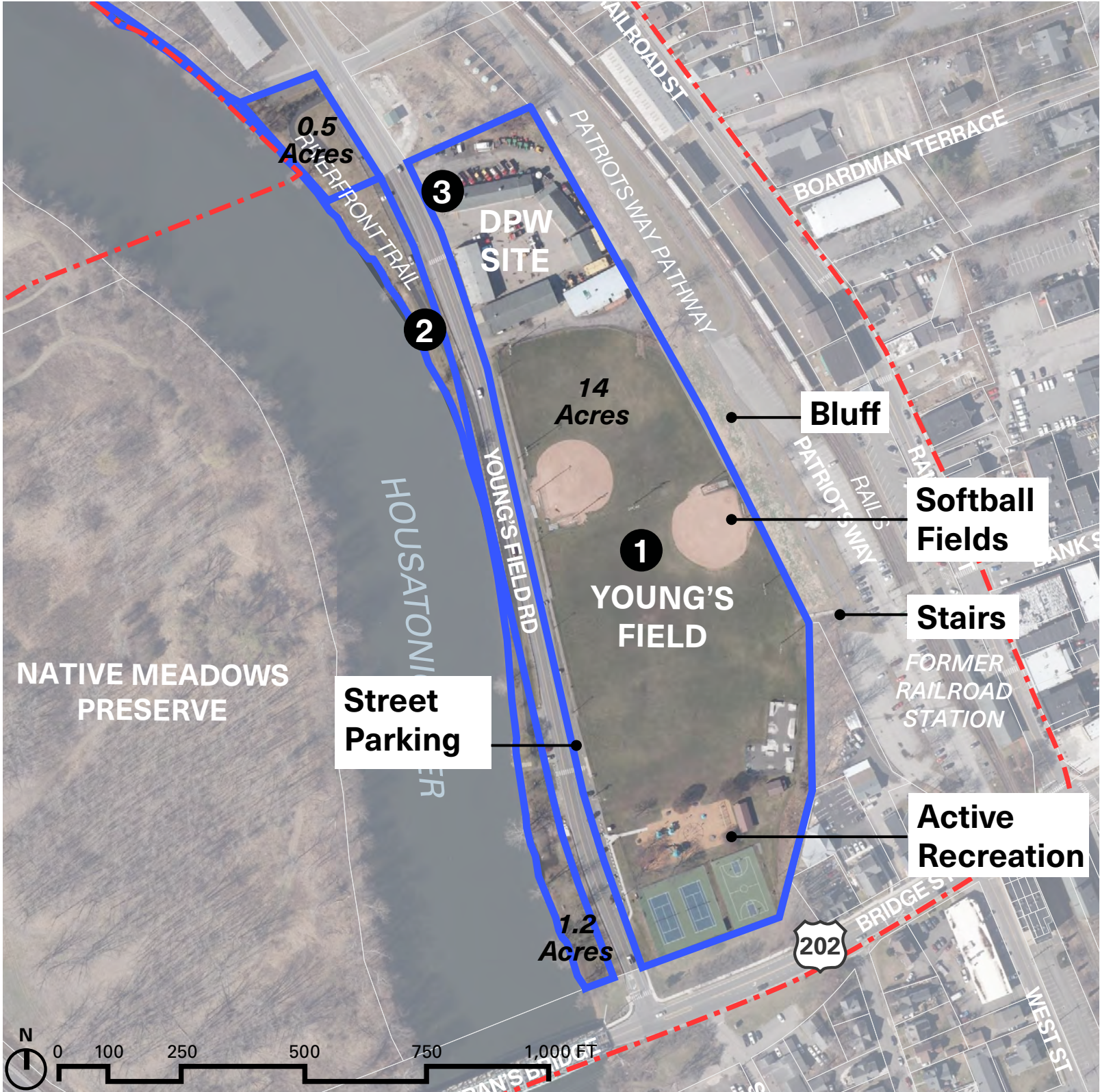
Young's Field



Riverfront Trail



Dept. Public Works



Young's Field and Department of Public Works (DPW)



Young's Field serves active recreation and events

The field is separated by a steep bluff from Patriot's Way and the Town Center

Patriot's Way



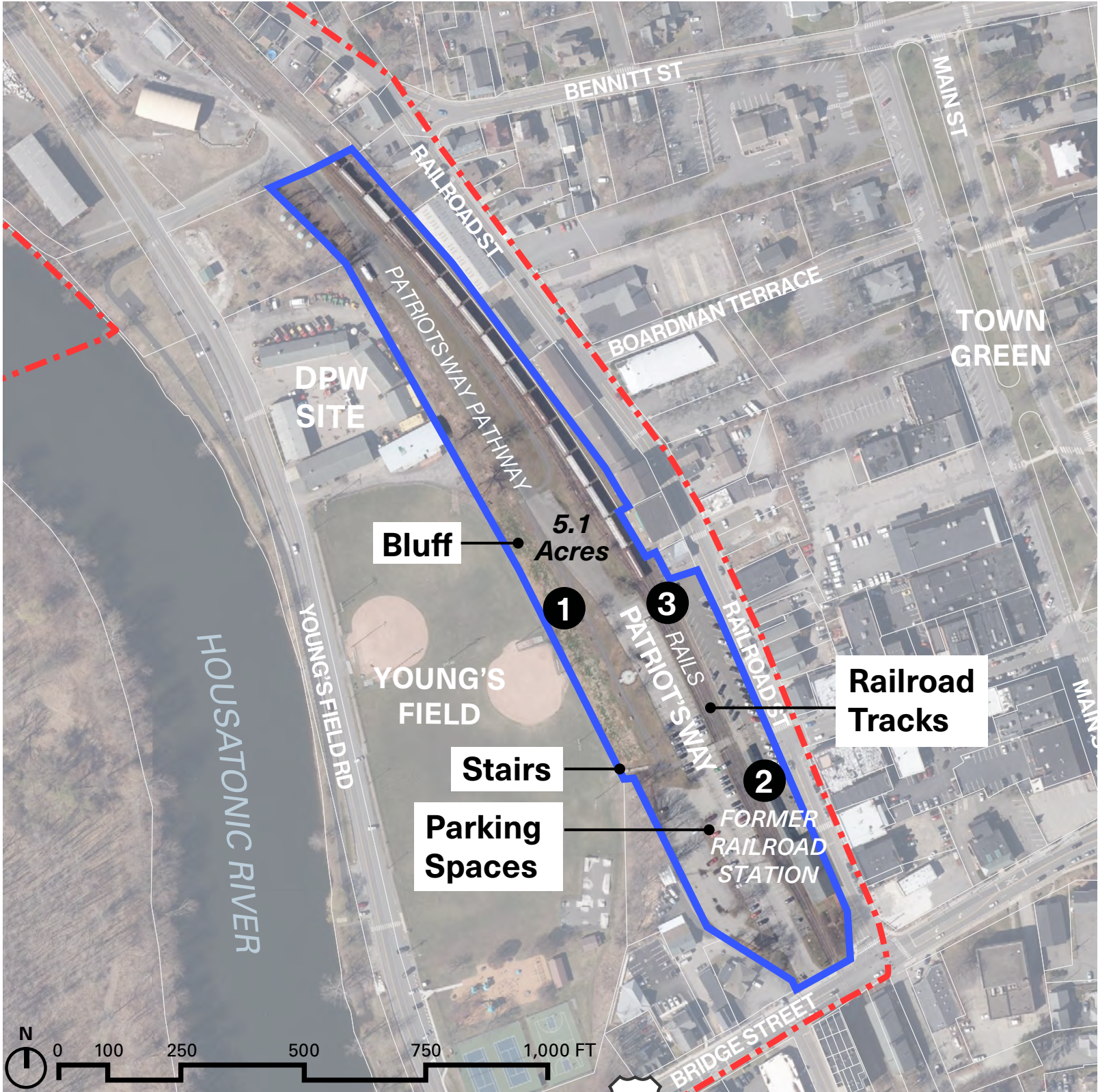
Trail at Patriot's Way



Former New Milford Railroad Station



Railroad Tracks



Patriot's Way

Parking can be a challenge especially during large events at Young's Field

Newly completed pathway along the Bluff

DPW Storage Area and Recycling Center



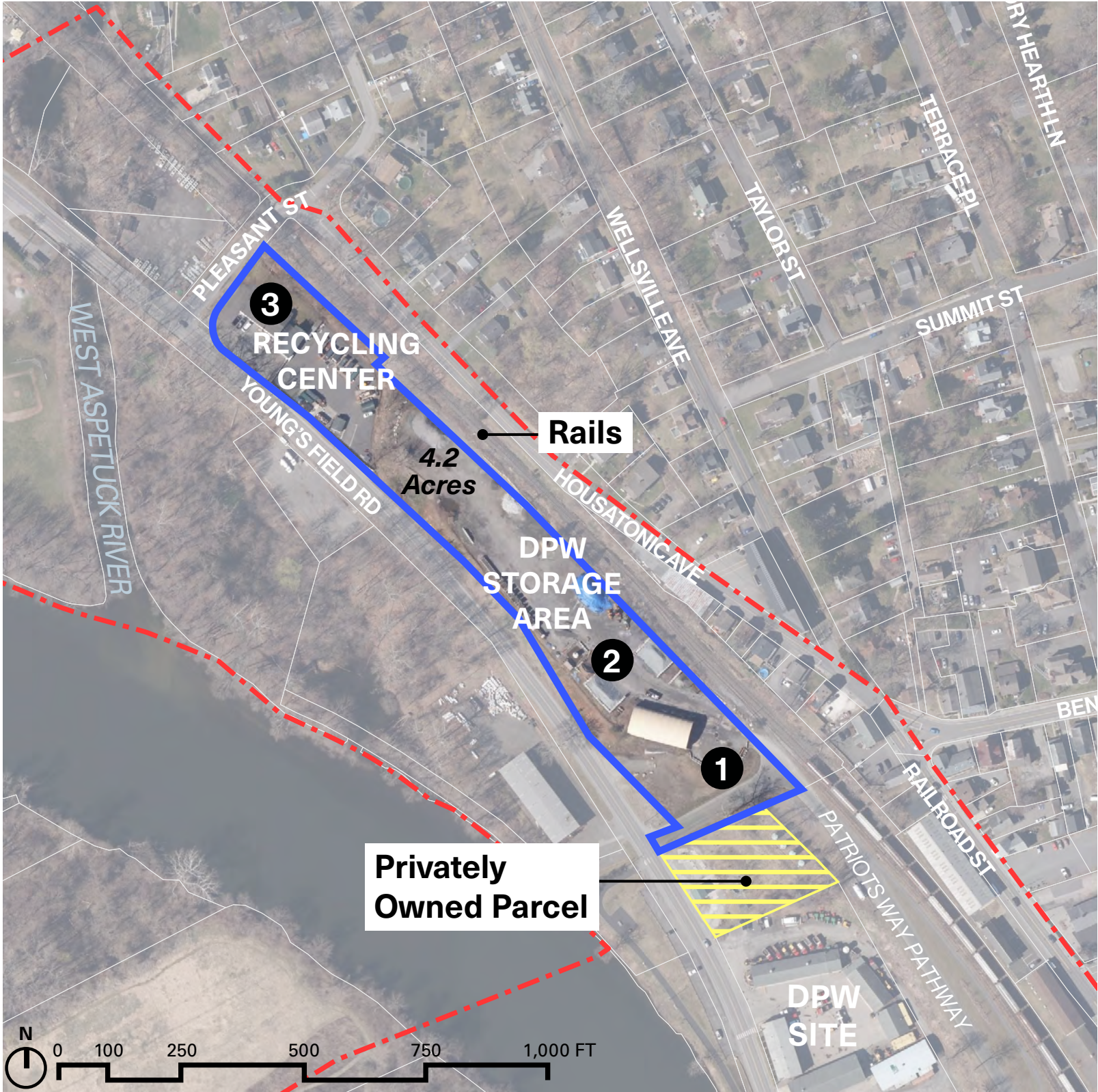
DPW Storage Shed



DPW Construction Staging and Storage



Recycling Center



DPW Storage Area and Recycling Center

Currently occupied by
utilitarian structures and
unkempt landscape

Helen Marx Park and West Aspetuck Wetlands



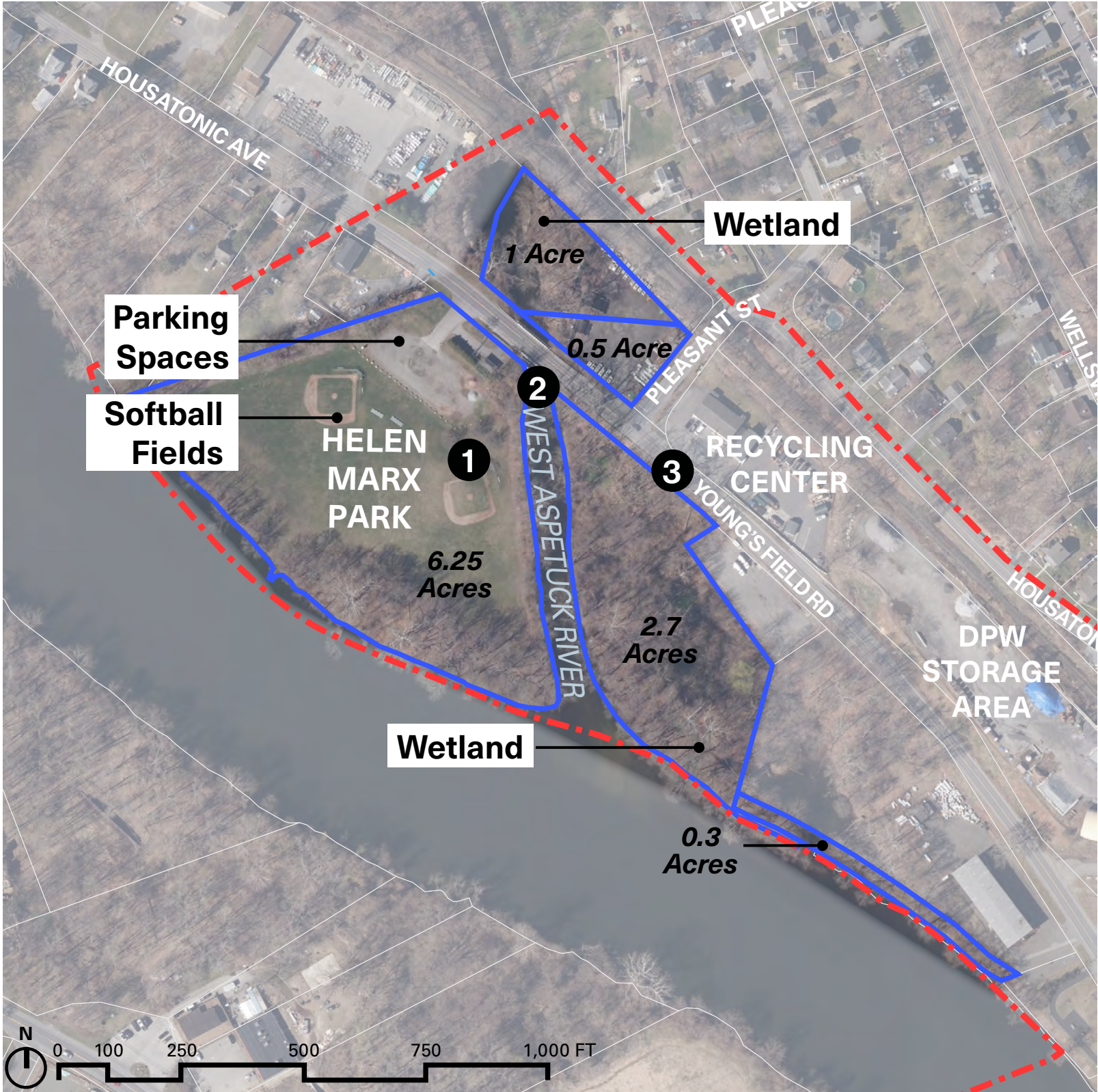
Sports Field



West Aspetuck River



Young's Field Road



Helen Marx Park and West Aspetuck Wetlands

Park gets flooded by river water and heavy rains

Helen Marx serves as a multipurpose sports field



Native Meadows Preserve



Native Meadows Preserve Trail



Flooding



Pedestrian Walkway on Veteran's Bridge



Native Meadows Preserve

Native Meadows
is permanent
conservation land

The trail is marked by
mowing and has limited
signage for wayfinding

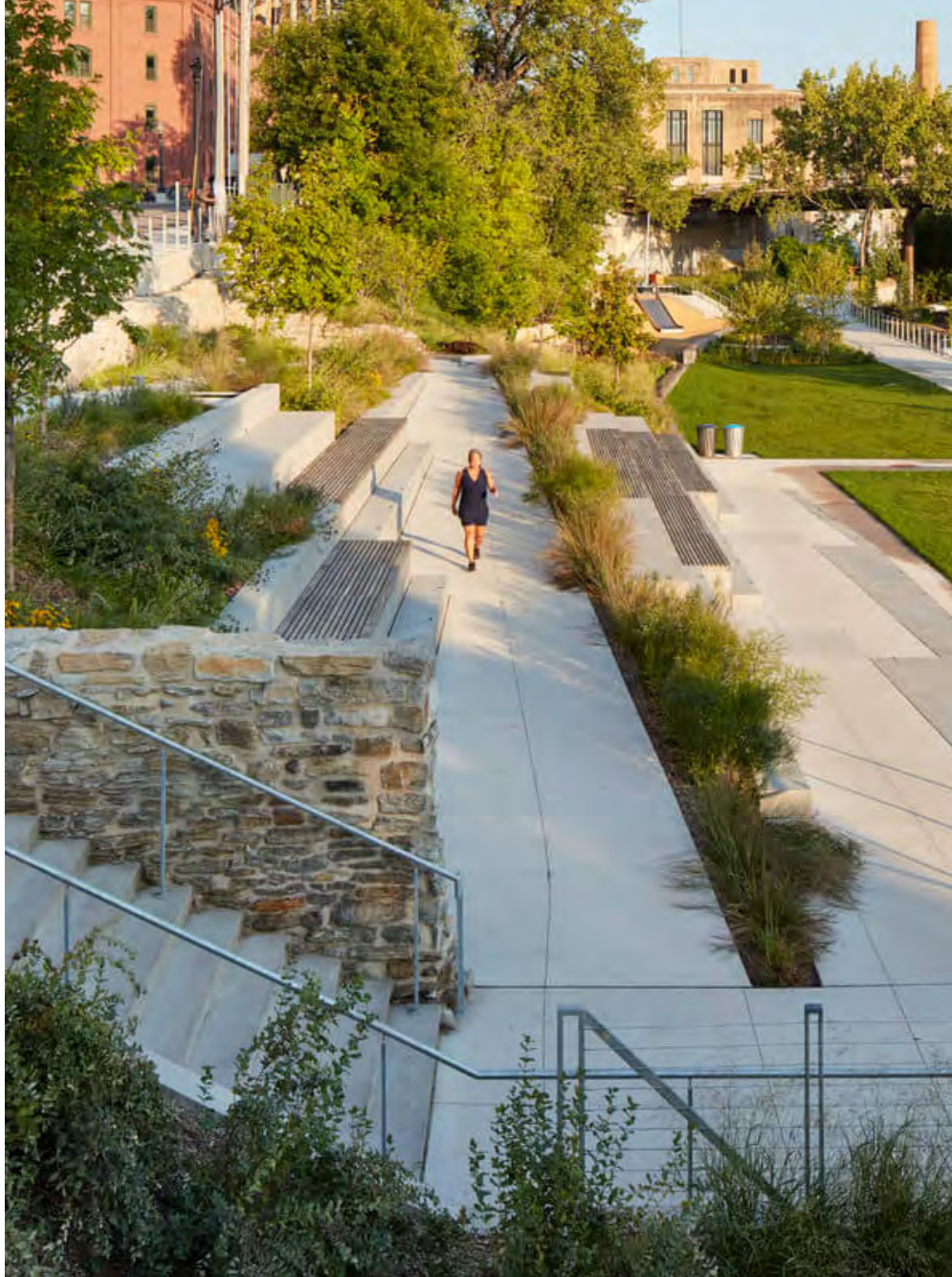
4

Key Design Challenges

How can we navigate steep slopes on the site?



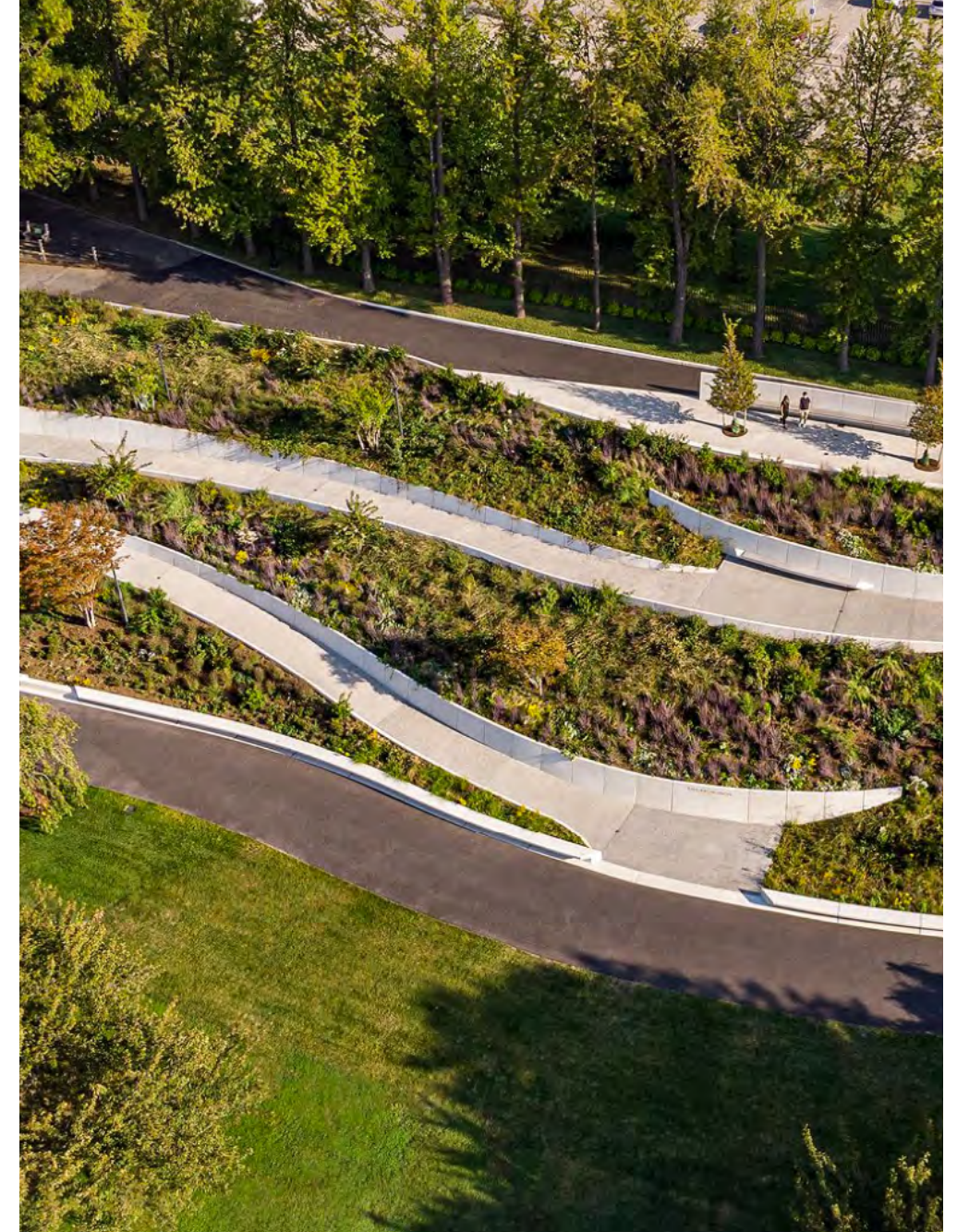
How can we navigate steep slopes on the site?



Water Works (Minneapolis, MN)



Tom Lee Park (Memphis, TN)

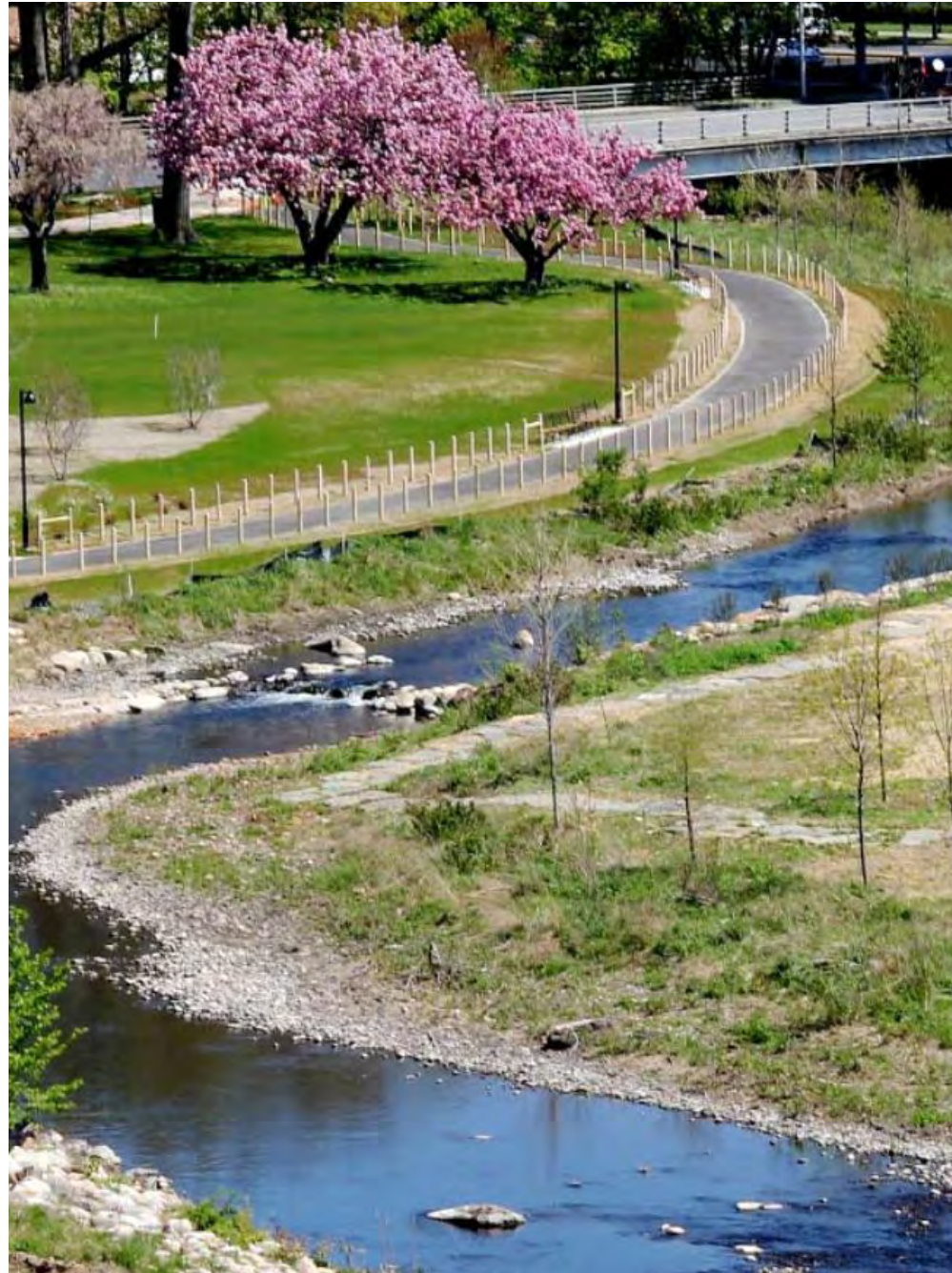


Brooklyn Botanical Garden (NYC, NY)

How can we reimagine the riverfront edge?



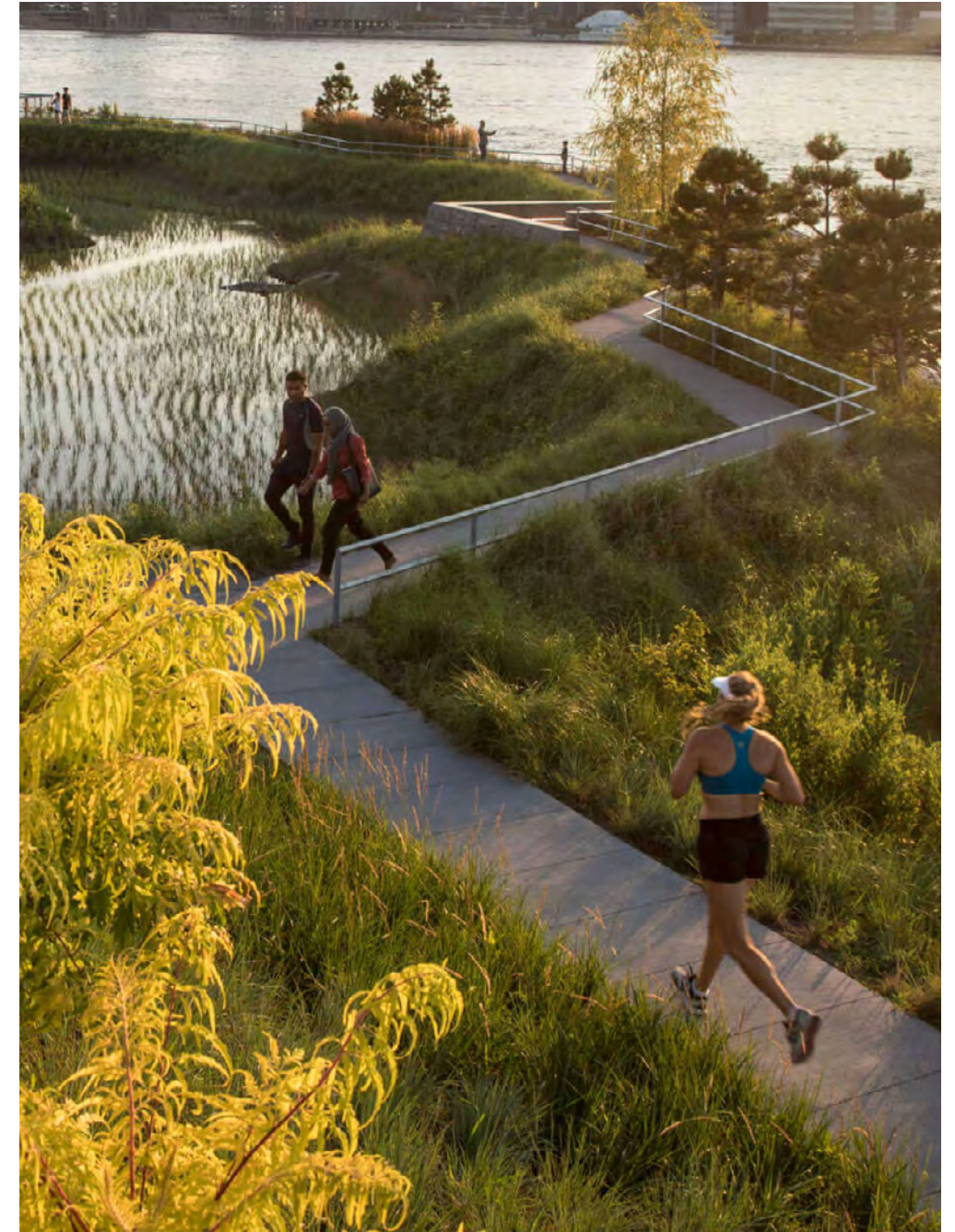
How can we reimagine the riverfront edge?



**Maintain a natural river's edge
(Mill River Park, CT)**



**Elevated boardwalk
(Riverfront Spokane, WA)**



**Softened and active riverfront edge
(Hunter's Point South Park, NY)**

How do we create space for flexible and active uses?



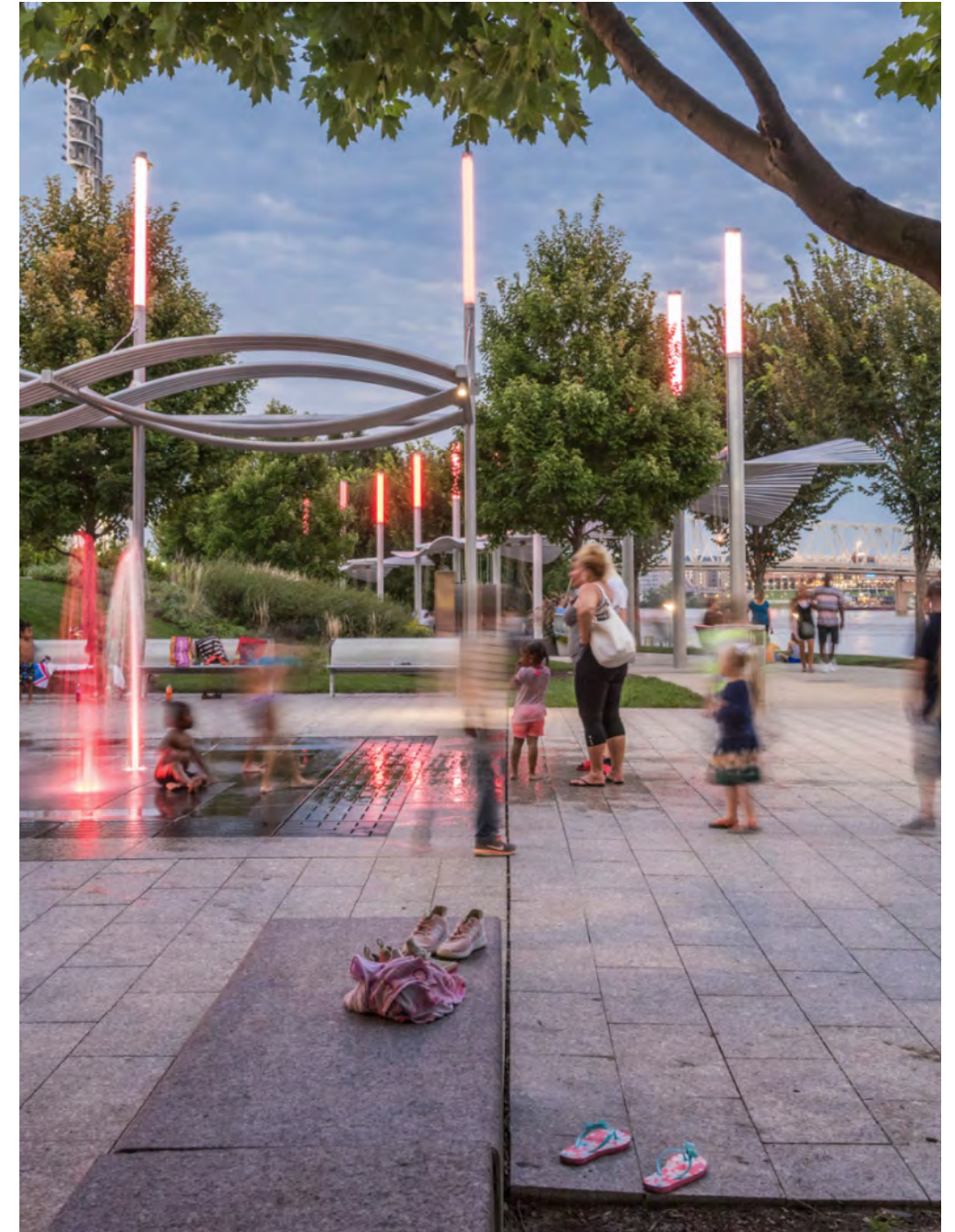
How do we create space for flexible and active uses?



Riverfront Park (Wilmington, NC)



Cumberland Park (Nashville, TN)



Smale Riverfront Park (Cincinnati, OH)

How can we make the riverfront more accessible for families and people of all ages?



How can we make the riverfront more accessible for families and people of all ages?



Tom Lee Park (Memphis, TN)



Smale Riverfront Park (Cincinnati, OH)



Far Rockaway Park (NYC, NY)



How do we create a space that works across seasons?

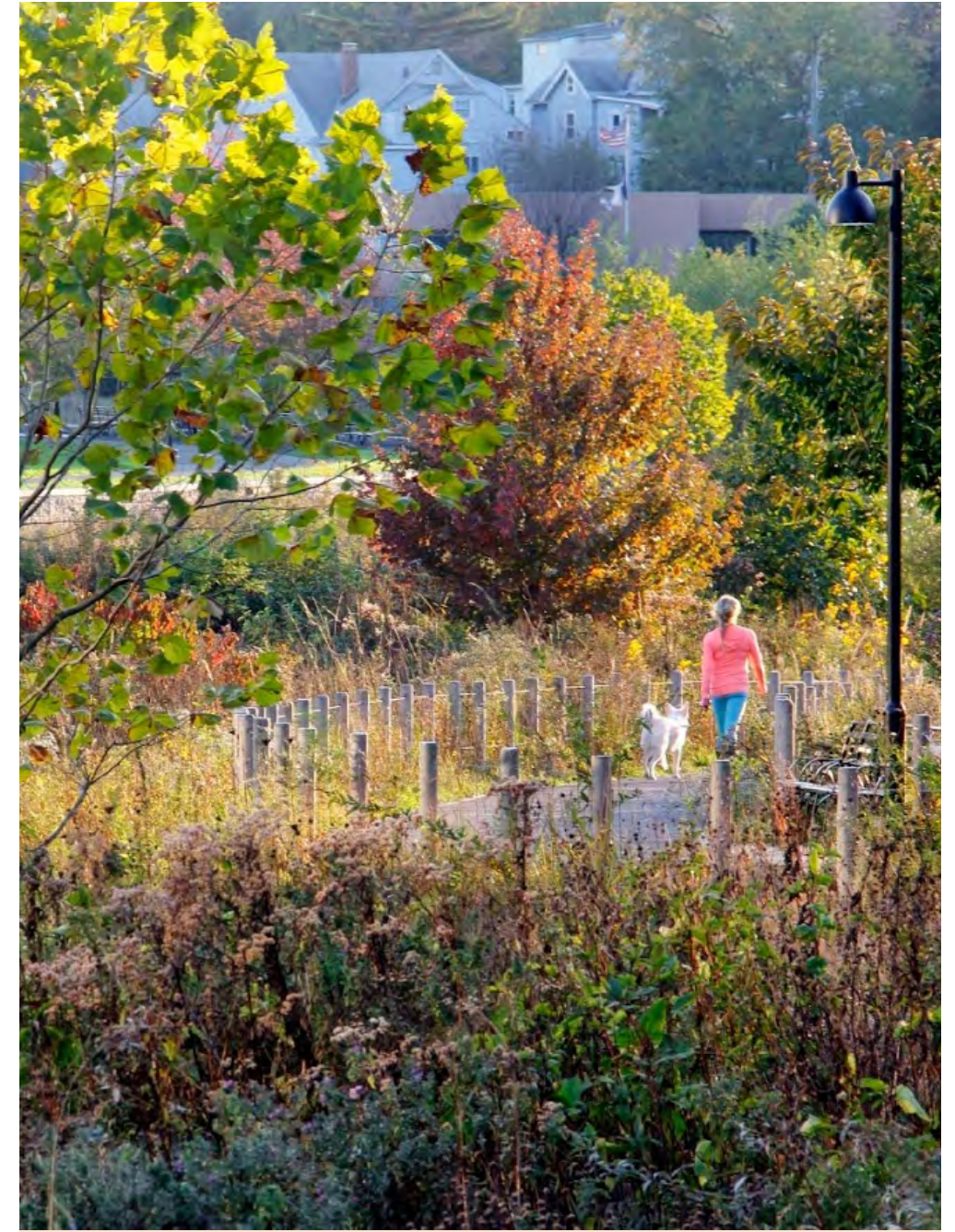
How do we create a space that works across seasons?



Glass City Park (Toledo, OH)



Cumberland Park (Nashville, TN)



Mill River Park (Stamford, CT)

How do we balance recreational/open space and development?



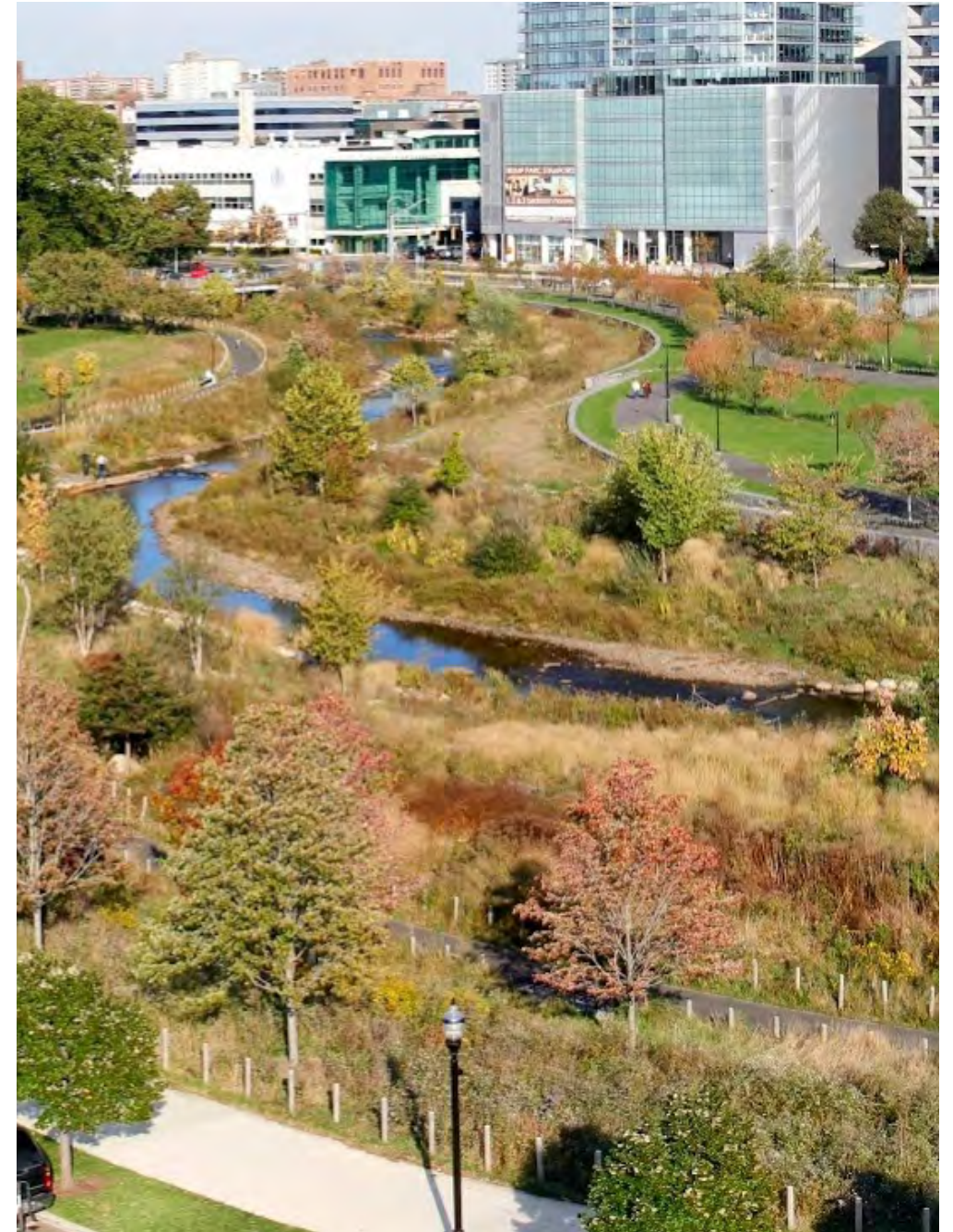
How do we balance recreational/open space and development?



Domino Park (Brooklyn, NY)



Meriden Green (Meriden, CT)



Mill River Park (Stamford, CT)

The riverfront is just one part of a larger local and regional open space network



5

Workshop Format

Today marks the first workshop in this phase of the project and a chance for New Milford's community to provide input and ideas on the future of the Riverfront.

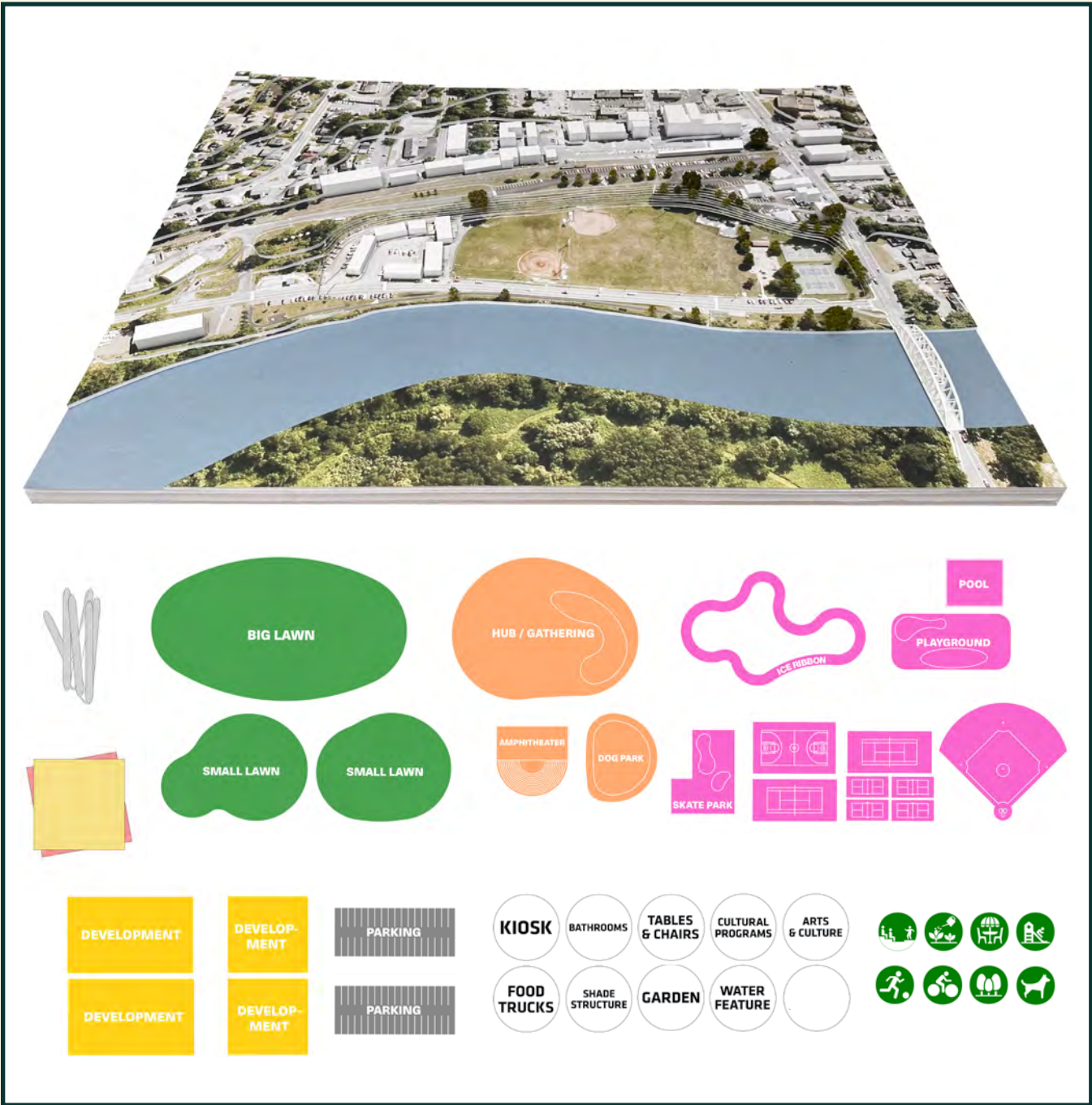
We will explore ideas for enriching New Milford's front yard with additional programming, landscape features, and development opportunities.

Today's Workshop Stations

Tell us what you want to see on the Riverfront!



Make your own Riverfront!



How does the sticker voting work?

Choose your top 3-5 options!

My Riverfront experience would be more enjoyable with...

Riverfront revitalization could be most supported by building...

The Riverfront's local ecology & flooding could be helped by...

The steep bluff at the Riverfront could be transformed into...













Our future Riverfront should include more...

I wish the Riverfront had nature-based opportunities like...

I wish that along our Riverfront we could...

Choose your top 5 options!

Have other ideas?
Share them here!

 <p>Maintain a natural river's edge</p>	 <p>Stroll on a boardwalk</p>	 <p>Access water activities</p>	 <p>Picnic & people-watch</p>
 <p>Attend outdoor performances</p>	 <p>Engage with nature</p>	 <p>Find some quiet space</p>	 <p>Shop or dine</p>
 <p>Visit a playground</p>	 <p>Have more green infrastructure</p>	 <p>Exercise outdoors</p>	 <p>Expand spaces for gathering</p>

How does the interactive model work?

Build your own Riverfront,
mix and match programs and
amenities!

The physical model or aerial print
will be the building ground



Toolkit

Pen

Sticky Notes

Lawn

BIG LAWN

SMALL LAWN

SMALL LAWN

Gathering Spaces

HUB / GATHERING

AMPHITHEATER

DOG PARK

Active

ICE RIBBON

POOL

PLAYGROUND

SKATE PARK

Baseball field

Development and Parking

DEVELOPMENT

DEVELOPMENT

DEVELOPMENT

DEVELOPMENT

PARKING

PARKING

Program Tokens

KIOSK

BATHROOMS

TABLES & CHAIRS

CULTURAL PROGRAMS

ARTS & CULTURE

FOOD TRUCKS

SHADE STRUCTURE

GARDEN

WATER FEATURE

Icons for walking, biking, trees, and dog

Take the Survey!

Scan QR Code:



Stay Engaged:

Join the Riverfront
Mailing List on
project website:
NMRiverfront.org



Community Workshop 1

Wednesday, June 4, 2025
7 PM

Richmond Senior Center
New Milford, CT

WXY